

Defining Disparity Related to Tobacco Use



A data driven process

Presentation Objectives

- ❑ To define the status of tobacco use, in particular cigarette consumption, in Kansas
- ❑ To identify groups at risk for higher tobacco use in Kansas
- ❑ To identify data gaps related to subpopulations throughout Kansas

Kansas

- Total Population in 2004: 2,734,502
- Median Household Income: \$42,920
- Individuals below poverty level: 11.7%

Gender

Male: 49.7%

Female: 50.4%

Race/Ethnicity

White, Non- Hispanic: 82.7%

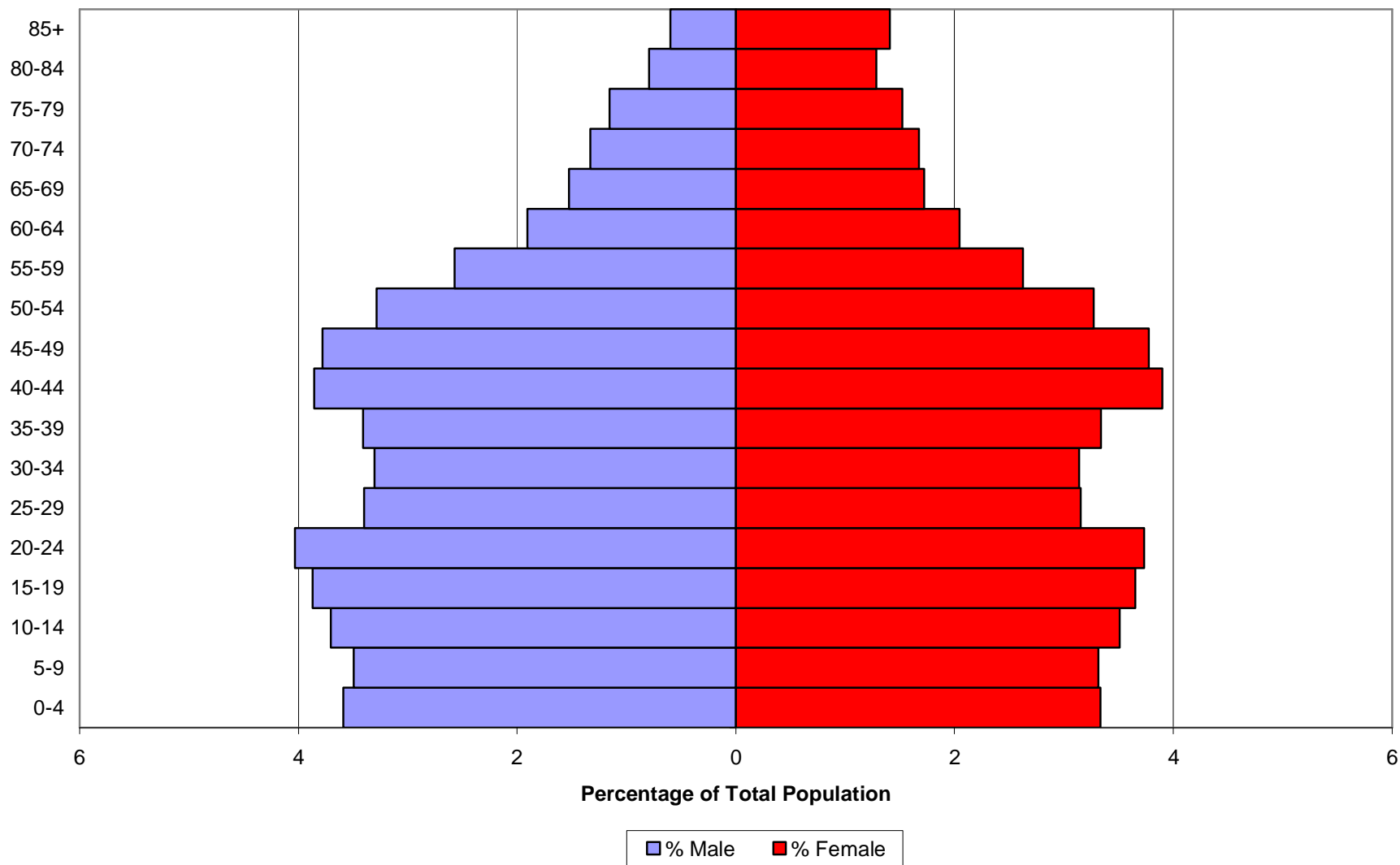
Black: 6.3%

Other: 3.4%

White, Hispanic: 7.6%

Kansas Cont.

Population Pyramid - State of Kansas



Kansas Cont.

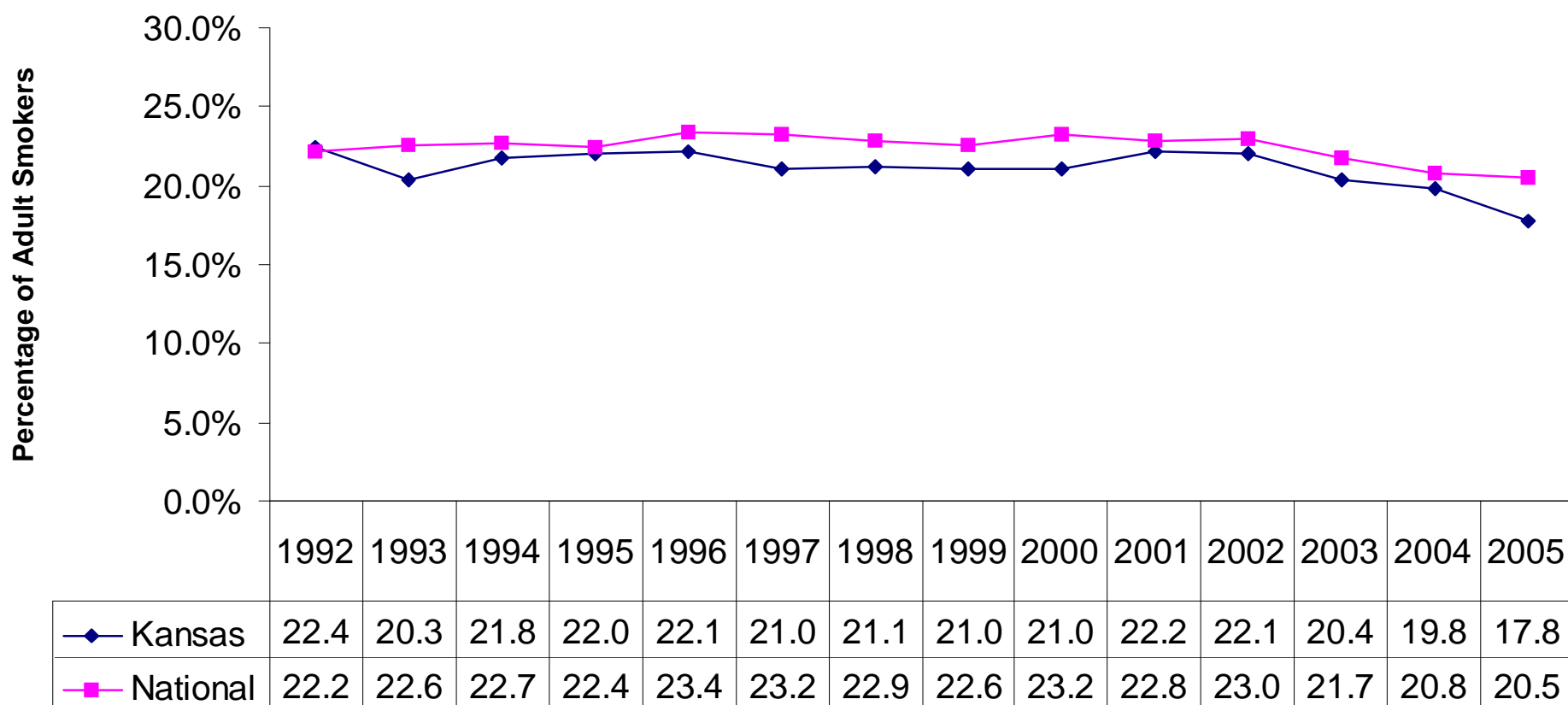
- ❑ Public Universities: Emporia State University, Fort Hays State University, Kansas State University, Pittsburg State University, University of Kansas, Wichita State University, Washburn University
- ❑ Community Colleges: Allen, Barton, Butler, Cloud, Coffeyville, Colby, Cowley, Dodge City, Fort Scott, Garden City, Highland (Doniphan County), Hutchinson, Independence, Johnson, Kansas City Kansas, Labette, Neosho, Pratt, Seward
- ❑ Private Colleges and Universities: Baker University, Barclay College, Benedictine College, Bethany College, Bethel College, Central Christian College, Friends University, Haskell Indian Nations University, Hesston College, Kansas Wesleyan University, Manhattan Christian College, McPherson College, MidAmerica Nazarene University, Newman University, Ottawa University, Southwestern College, St. Mary's College, Sterling College, Tabor College, University of Saint Mary

Kansas Cont.

- ❑ Military Bases: Fort Leavenworth, McConnell Air Force Base, United States Disciplinary Barracks, Fort Riley
- ❑ State Prisons: El Dorado Correctional Facility, Ellsworth Correctional Facility, Hutchinson Correctional Facility, Lansing Correction Facility, Larned Correctional Facility, Norton Correction Facility, Topeka Correctional Facility, Winfield Correctional Facility, Wichita Work Release Facility
- ❑ Federal Prisons: United States Penitentiary - Leavenworth
- ❑ American Indian Nations: Iowa Tribe of Kansas and Nebraska, Prairie Band Potawatomi Nation, Kickapoo Tribe in Kansas, Sac and Fox Nation

Current Smokers

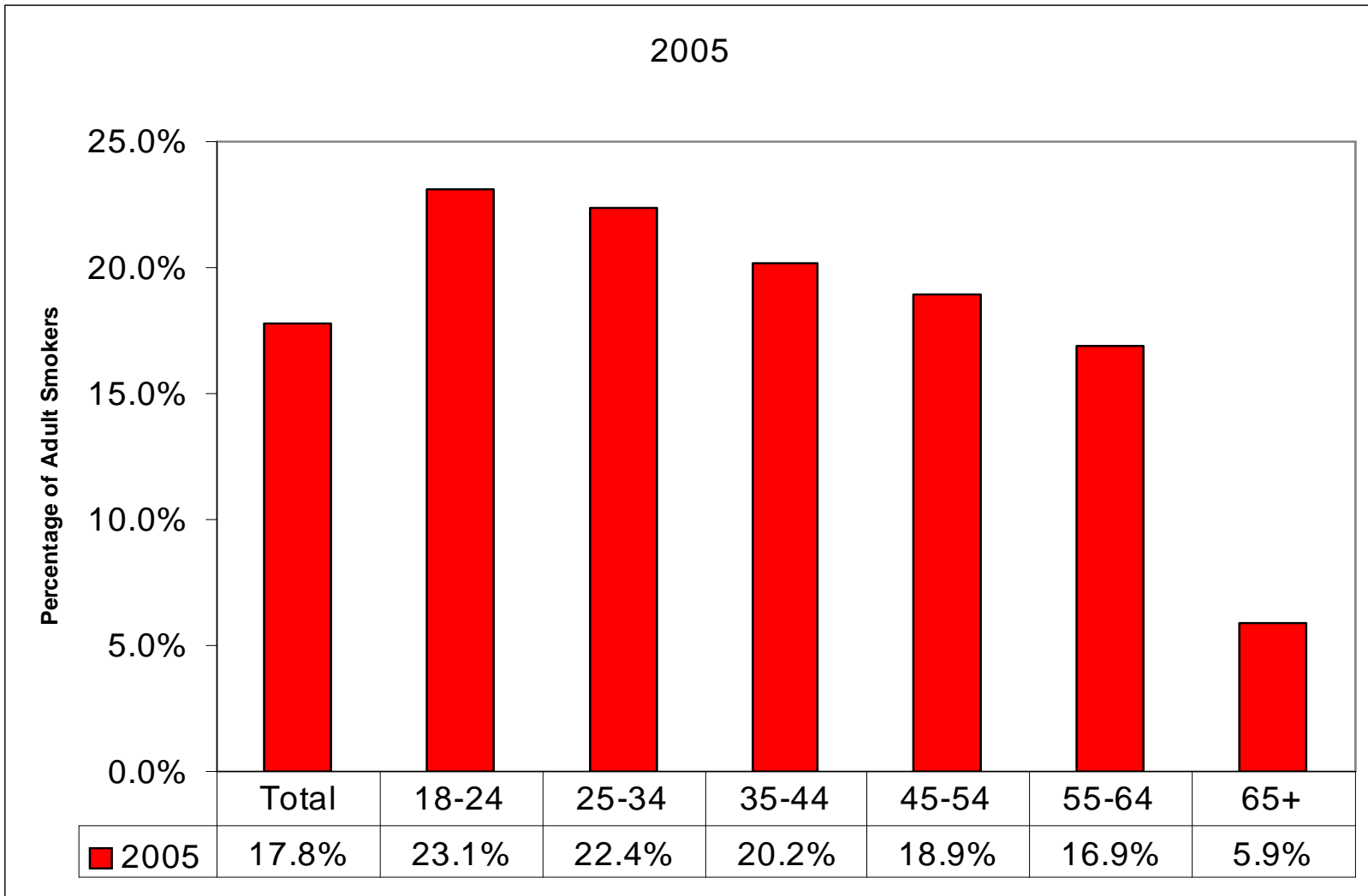
Percentage of Current Smokers aged 18 Years and Older in the State of Kansas and Nationally(1992 – 2005)



Smoking Prevalence by Gender

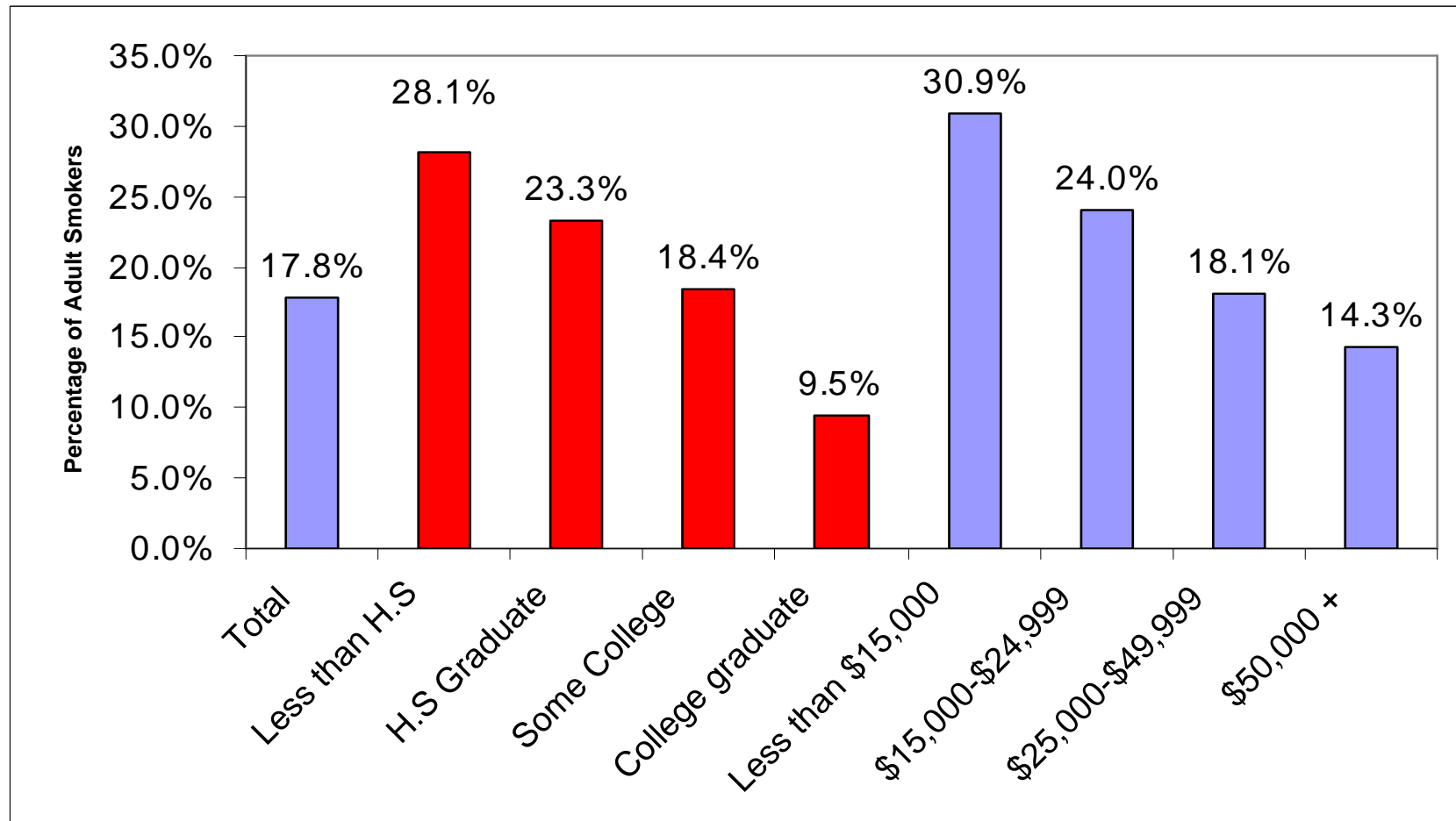
- In 2005, 18.9% of males aged 18 and older reported being current smokers. Only 16.8% of women aged 18 and older reported being current smokers during this same time period

Prevalence of Cigarette Use by Age Group



Socioeconomic Status

Percentage of Current Cigarette Smokers in Kansas Aged 18 Years and Older by Education and Household Income (2005)



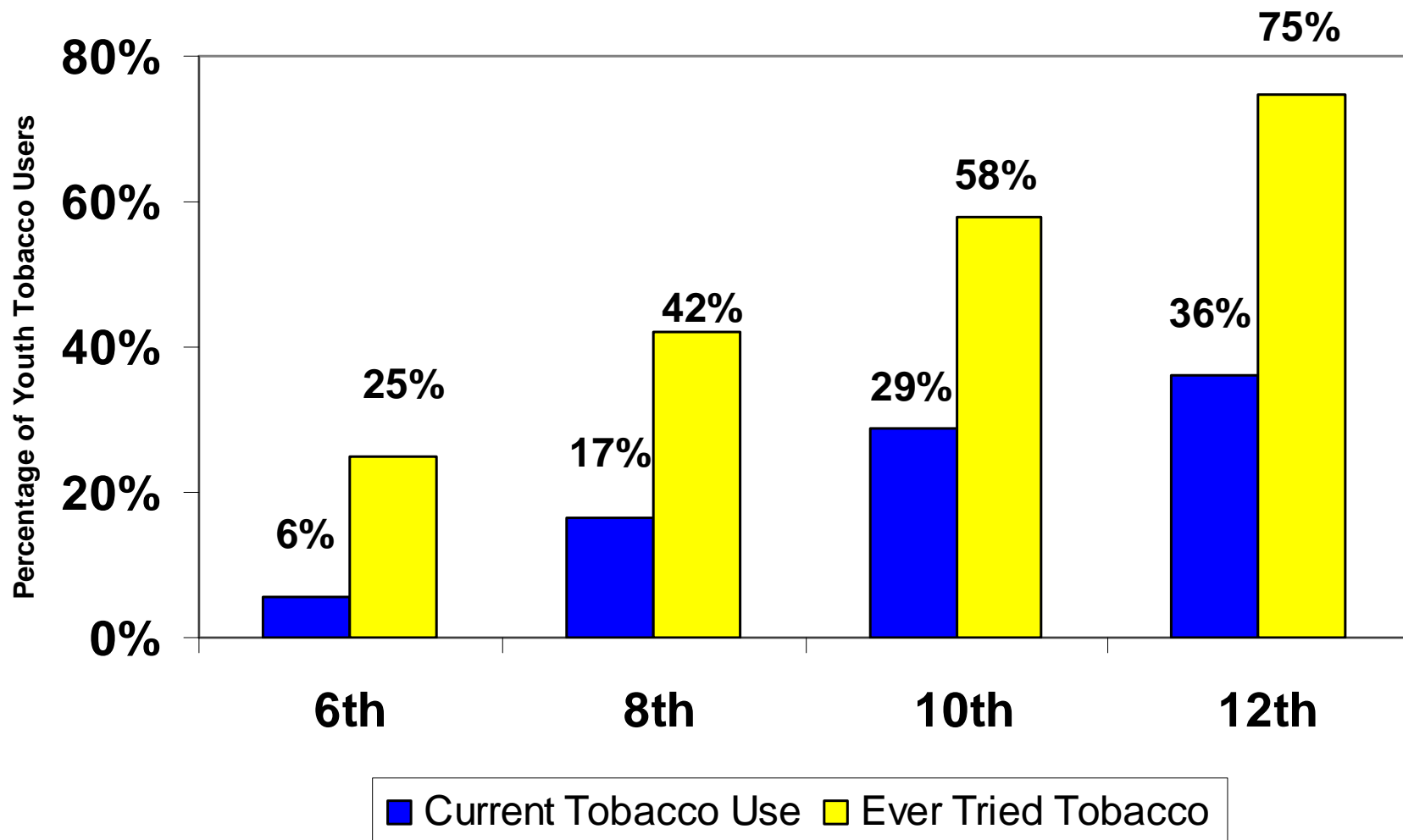
Youth Tobacco use

- ❑ It is estimated that over 80% of smokers begin before the age of 18
- ❑ According to the 2005 Youth Risk Behavior Survey, 21.0% of High School students in Kansas report being current smokers. Among all High School students 10.8% report being current smokeless tobacco users, however 17.4% of High School males report being current smokeless tobacco users.

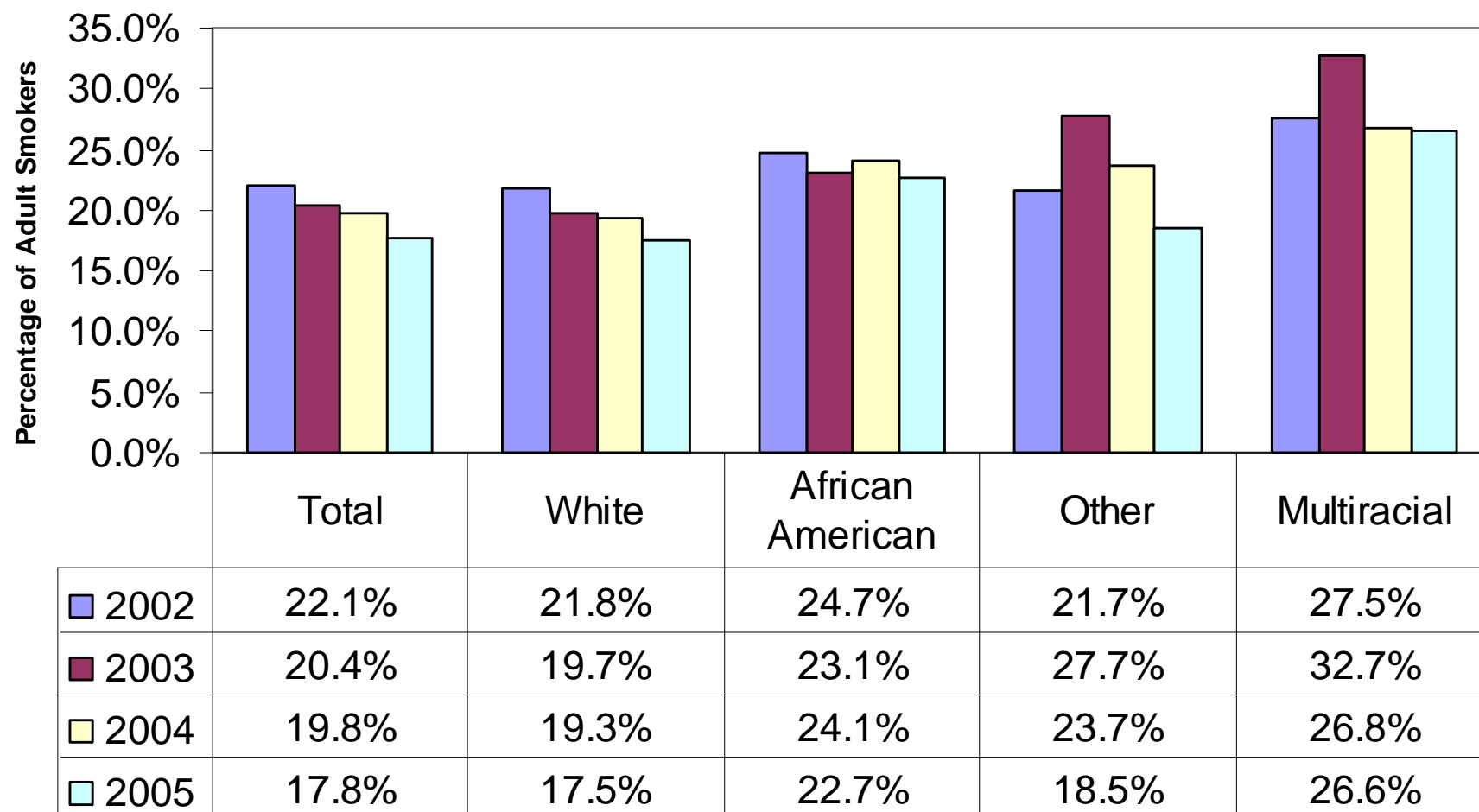
Youth Tobacco Use

Percentage of Current and Ever Tried Youth Tobacco Users by Grade – 2000

Tobacco use includes using one or more of the following: cigarettes, cigars, pipes, bidis, kreteks, smokeless or snuff tobacco.



Prevalence of Current Smokers by Race, 2002-2005



Hispanic Population

- Prior to 2005, little detectable difference existed between the prevalence of current adult smokers among the Hispanic and non-Hispanic populations
- In 2005, the prevalence of current smokers among Hispanic individuals dropped to 15.8% whereas among the non-Hispanic population this prevalence was 18.0%.

Depression Status

- The Kansas Tobacco Use Prevention Quitline currently offers additional resources and counseling to individuals who report they “Have you felt sad or blue every day for the last 2 weeks?” – Represents over 35% of callers
- According to the 2005 BRFSS 34.4% of adults aged 18 and older with 14+ days in the past 30 where their mental health was not good are current smokers.

LGBT Population

- National survey's have found that the smoking prevalence among the LGBT population ranges from 30-50%.
- Currently, no data exists to track this information in Kansas
 - However, in late March/early April 2007 Kansas specific information will be available

Disability Status

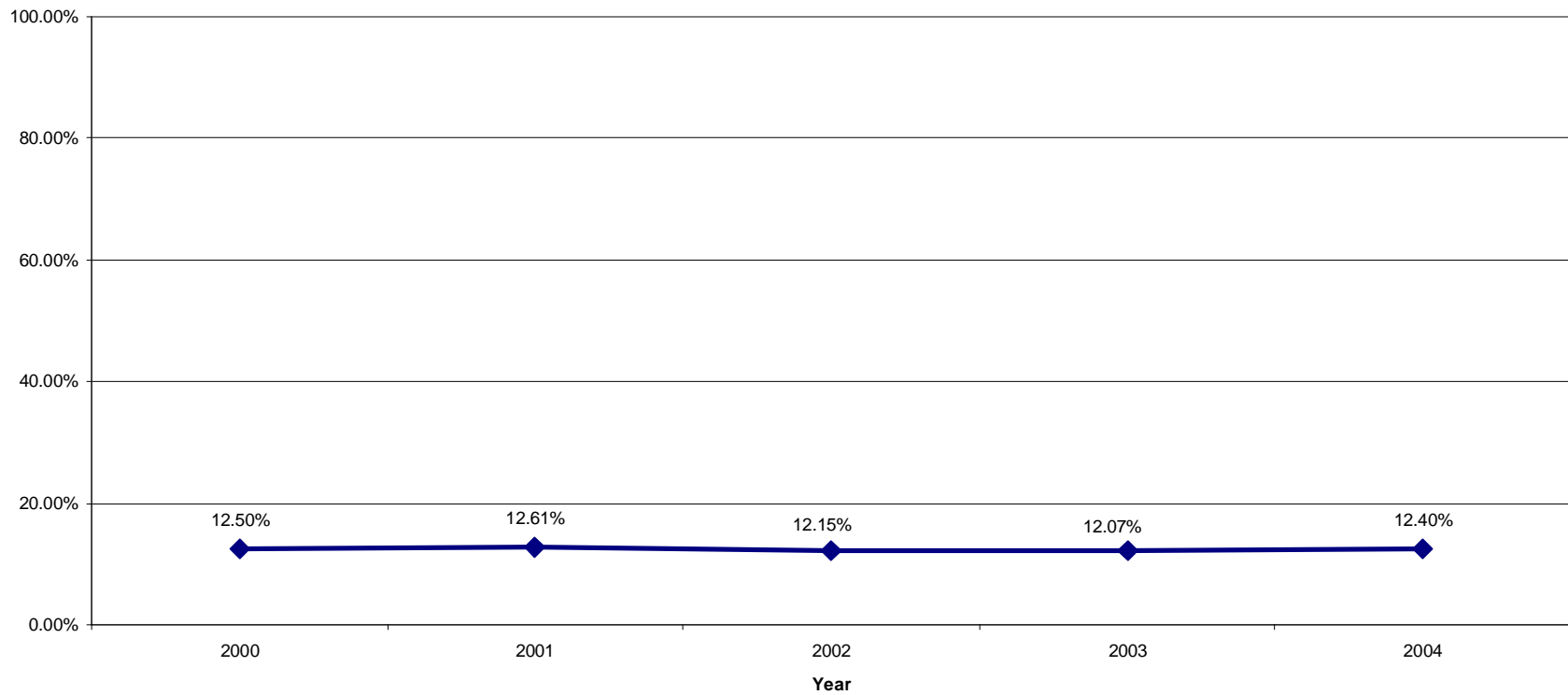
- According to the 2005 BRFSS, 19.8% of individuals living with a disability report being current smokers as compared to 17.4% of individuals living without a disability
- The Kansas Quitline recently began tracking individuals with disabilities during the intake process, nearly 25% of callers report limited activity

Medical Coverage

- ❑ Of the over \$900 million in annual health care costs related to smoking, it is estimated that nearly \$200 million is covered by state Medicaid
- ❑ According to the 2005 BRFSS, 30.0% of adults aged 18 and older who are uninsured are current smokers

Pregnant Women

Prevalence of Smoking During Pregnancy, 2000-2004



Pregnant Women Cont.

- Among the 18-24 year old age group, the prevalence of smoking during pregnancy is approximately 18%
- Among the Hispanic population, the prevalence of smoking during pregnancy is approximately 3%

Data Gaps and Missing Populations

- ❑ Inability to separate out racial information further
 - Asian Americans, Pacific Islanders, American Indian/Alaska Natives
- ❑ Limited Geographic information
 - Small communities
- ❑ Offender populations
 - Prison populations, Juvenile Detention Centers
- ❑ College populations
 - Individual surveys, not standardized
- ❑ Military populations
 - Very transient, limited information exists
- ❑ Others?

Questions?



Harlen Hays

hhays@kdhe.state.ks.us

785-296-2330